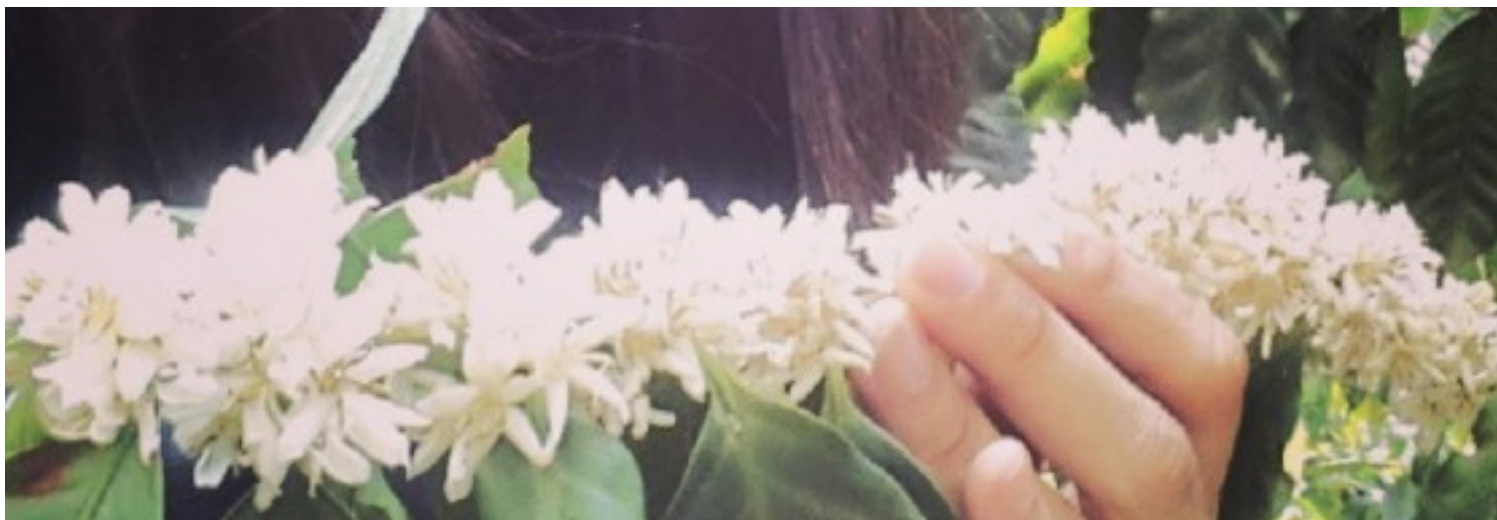


# El Salvador Palin Estate

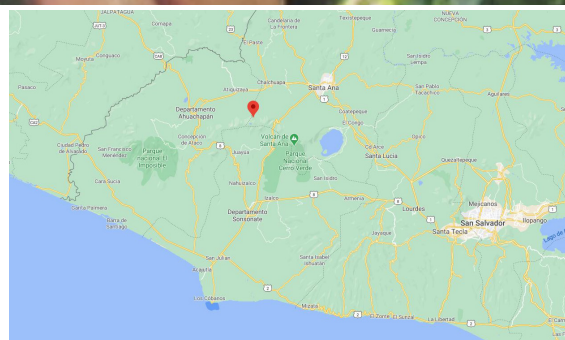
InterAmerican  
**COFFEE**



## Farm Information

**Country:** El Salvador  
**Region:** Apaneca-Illamatepec  
**Altitude:** 1.250 masl  
**Farm:** Palin Estate

Palin is a third-generation family-run coffee plantation, tracing its coffee heritage back to the 1900s when the family began farming in Apaneca-Illamatepec Coffee region in western El Salvador (Tacuba, Ahuachapan) to be exact. Carolina has been involved with the farms even more closely after my father's passing in 2010. Today, she draw strength from her historical roots using traditional practices combined with more modern methods to ensure the highest quality coffee.



## Coffees

A coffee with a high floral acidity, a medium body and flavours of soft caramel, strawberry and melon.

Caramel

Strawberry

Melon

**Varieties:** Red Bourbon

**Processing:** hand-picked, unwashed, sun-dried, honey processed



**InterAmerican Coffee GmbH**  
Coffee Plaza | Am Sandtorpark 4  
20457 Hamburg, Germany  
Phone +49 40 373 367  
E-Mail: iac.hamburg@nkg.coffee

**InterAmerican Coffee Schweiz**  
Bahnhofstrasse 22  
CH-6300 Zug, Switzerland  
Phone +41 41 728 7286  
E-Mail: iac.zug@nkg.coffee

**InterAmerican Coffee Ltd.**  
59-61 Farringdon Road  
London EC1M 3JB, United Kingdom  
Phone +44 20 7796 2255  
E-Mail: iac.london@nkg.coffee

[www.interamericancoffee.de](http://www.interamericancoffee.de)